

Congratulations on purchasing the 1901 Bathroom Accessories. You are now the owner of a quality product, manufactured to exacting standards. Fitting your accessories is easy when you follow these instructions.

1901-Single Backplate fitting

- Identify all components.
- Establish position for accessory.
- Mark out fixing holes (see figure 1).
- Drill holes to suit.
- Put raw plugs in wall, if required.
- Screw fixing plate to wall (shorter side against wall, see figure 2).
- Loosen off grub screw but do not remove.
- Place accessory over fixing plate with grub screw at bottom.
- Tighten up grub screw until accessory is secure against the wall.

1901-Double Backplate fitting

- Establish position for accessory.
- Mark out fixing holes (see figure 1 and figure 3).
- Drill holes to suit.
- Put raw plugs in wall, if required.
- Screw fixing plate to wall (shorter side against wall, with lugs at top, see figure 2).
- Loosen off grub screw but do not remove.
- Place accessory over fixing plate with grub screw at bottom.
- Tighten up grub screw until accessory is secure against the wall.

Figure 1.

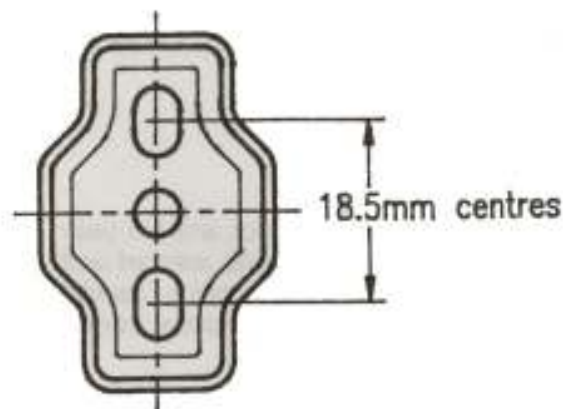


Figure 2.

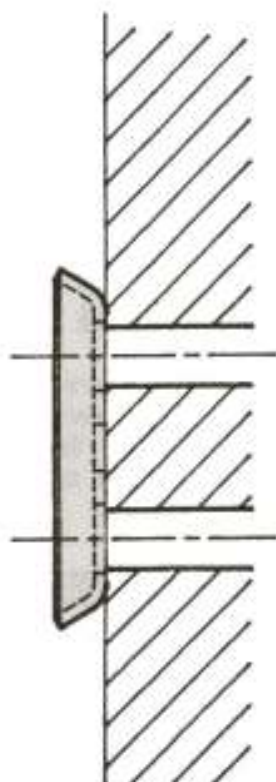
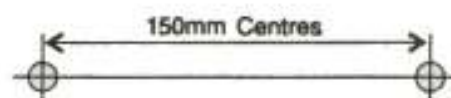
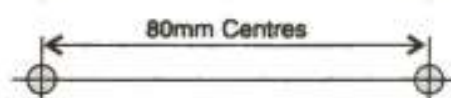


Figure 3.

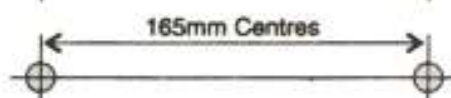
Toilet Roll Holder



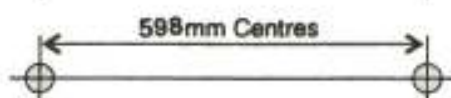
Toilet Roll Holder (Dog Bone)



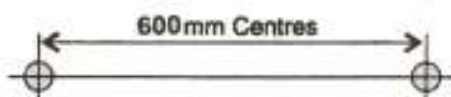
Wire Sponge/Soap Basket



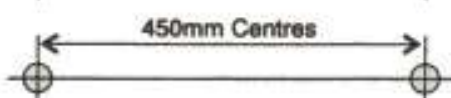
Single Towel Rail



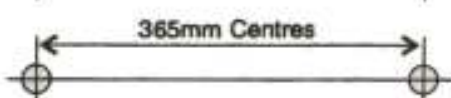
Double Towel Rail



Glass Shelf



Gallery Shelf



ALL CENTRES REFER TO THE PILLAR CENTRES.
GUIDE DIMENSIONS ONLY.